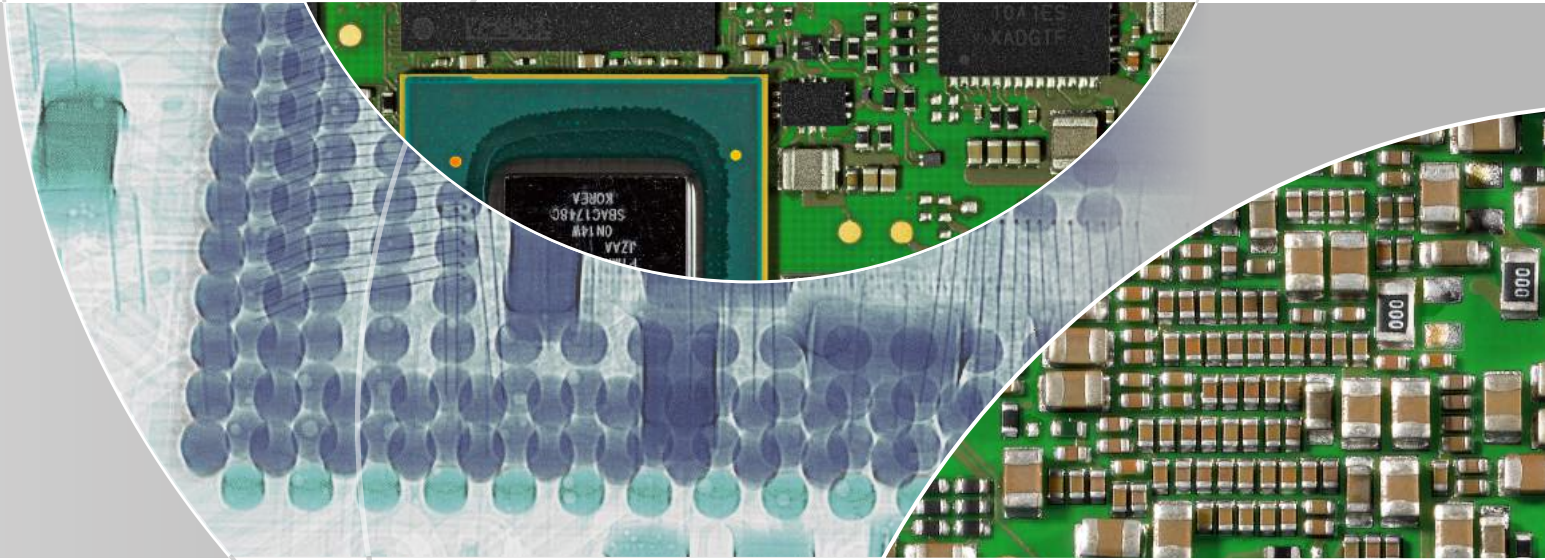


# PHYTEC

Together. Successful.





## Successful Solutions – for a long-lasting partnership

For more than 30 years, PHYTEC products have proven themselves among the most demanding conditions. Our products are in industries including medical technology, transport and traffic, energy, avionics, building automation, drive technology, agricultural engineering and automotive. Over many years and projects, successful business relationships with well-known companies confirm our quality and attitude:



**Matthias Rust**  
*IVU Traffic Technologies AG, Corporate Management* "PHYTEC's expertise in electronics, software and mechanics ideally complements our in-house skill set. We currently work together on the fourth generation IVU device. With PHYTEC we have found an innovative partner that is able to develop cutting-edge products that meet various market requirements."



**Peter Schmidlin**  
*Belimo, Head of Innovation, Corporate Management* "When we started working with PHYTEC to implement Linux-based, form-fit embedded solutions in 2009, we were impressed with PHYTEC's hardware and software expertise from the very beginning. PHYTEC has become a trusted partner for Belimo and we have since carried out multiple projects together."



**Rolf Hochstrasser**  
*Project Manager Innovation, Thermoplan* "The various development projects with PHYTEC were handled very professionally. The PHYTEC team is very flexible, fast, and definitely the right partner for us. The chemistry between the developers of the two companies is also important for us when working with a development partner. We have had very good experiences with PHYTEC."

**Together. Successful.**



### Reference Partners

... | proLogistik | Belimo | Groeneveld ICT Solutions B.V. | Thermoplan | ChargeIT mobility | iNOEX | Waldorf Music | meteocontrol  
ABL SURSUM | Ziehm Imaging | Bombardier | Interflex | IVU Traffic Technologies | Milon Industries | IBA Dosimetry | Moog



## Embedded Components – added value through advance performance



How can PHYTEC help your success? To answer this question, we bundle your core competences with ours. You benefit from over 30 years of PHYTEC experience with embedded systems and our numerous inputs – from direct access to our wide range of state-of-the-art System on Modules and, based on these Modules, our Single Board Computers to implementing an operating system and our extensive software services.

Customized products are also part of our range of solutions. On request, this includes housing design and complete assembly. Long-term cooperation with customers and business partners is our goal. That is why we rely on mutual trust and open communication. In a project with PHYTEC, you keep full control and benefit from mature and cost-efficient solutions.

The optimal basis for our successful cooperation is arranged by starting with an individual workshop so that you can get to know us personally. We regularly perform information exchanges at the developer level throughout the project.

*Product Change Management and  
Project Management – Change is part  
of the product lifecycle.*

ProduktDB

Dashboard Fertigungsanfall Stocklisten Transachvers Baseline **PCNs** Administration menu

Home > PCNs

### PCNs

Date of first appl.	Status	Subject	Manufacturer	Release PCNs	Withdrawn PCNs
2018-02-05	Unfinished				
2018-02-05	PCN Released	SE178009 Rev (Chip) 1.2 DVK (PROCELL)	PCP Technologies (SICREX)	yes	yes
2018-02-05	PCN Released	PCN_LPC1114_Driver_2.0 (V372)	Quanta/Winhex Software (Ch. 1.0) (B9901)	yes	yes
2018-02-05	PCN Released	PCN_10821_SCL_8052	Nitraz Techno sp (P00024)	yes	yes

No.	Insgesamt	Clear	Antrag	Ende	Start
1	Erarbeitung Pflichtenheft	30 Tage	Mon 05.03.18	Fre 26.03.18	
2	Freigabe Pflichtenheft	0 Tage	Mon 19.03.18	Mon 19.03.18	
3	Erstellung Schaltplan	5 Tage	Mon 19.03.18	Fre 23.03.18	
4	Freigabe Schaltplan	0 Tage	Mon 26.03.18	Mon 26.03.18	
5	Erstellung Layout	3 Tage	Mon 26.03.18	Mit 28.03.18	
6	Freigabe Layout	0 Tage	Don 29.03.18	Don 29.03.18	
7	Materialbeschaffung	20 Tage	Don 29.03.18	Mit 25.04.18	
8	Produktion Prototypen	5 Tage	Don 26.04.18	Mit 02.05.18	
9	Inbetriebnahme	5 Tage	Don 03.05.18	Mit 09.05.18	
10	Erstellung Inbetriebnahmeprotokoll	2 Tage	Don 03.05.18	Fre 11.05.18	
11	Freibereit	10 Tage	Mon 14.05.18	Fre 25.05.18	
12	Start Redesign	0 Tage	Mon 28.05.18	Mon 28.05.18	

Together. Innovative.



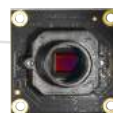
System on Modules



Single Board Computers



Internet of Things



Embedded Imaging



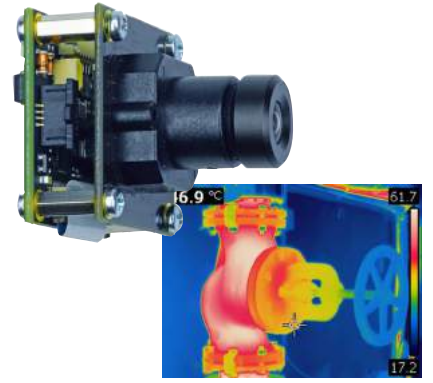
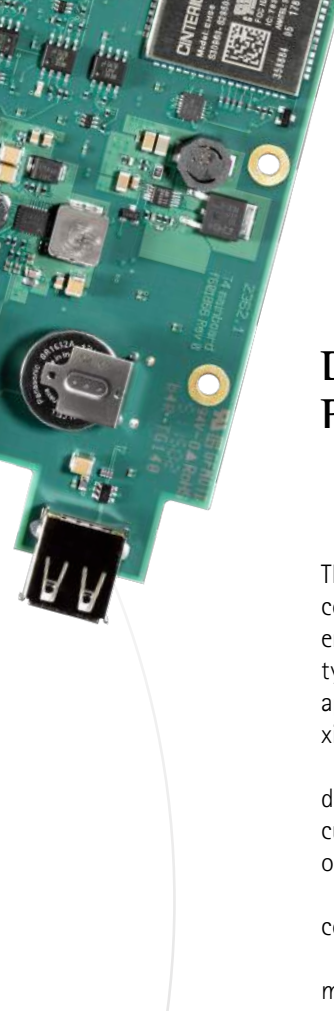
Software



Customizing

## Product Families





## Development, Production and Service – from a single source

The development and production of your electronics directly at our company location in Mainz is part of the PHYTEC philosophy and ensures you the highest degree of reliability, flexibility, and security - essential in view of increasing security requirements. This also applies to fast and agile hardware developments, as well as the proximity of technical engineering and optimal production conditions.

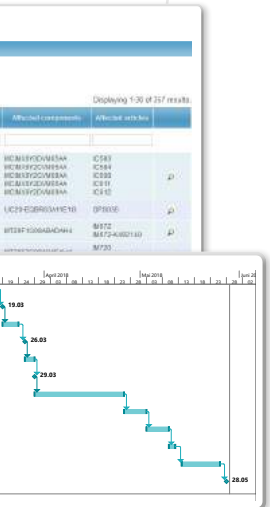
Research competence centers for future technologies such as data science and artificial intelligence, as well as for 3D-printed circuit boards and housings, develop further innovations and support our customers in their tangible projects.

To this end, we work with agile teams in order to optimally complement our customers' expertise.

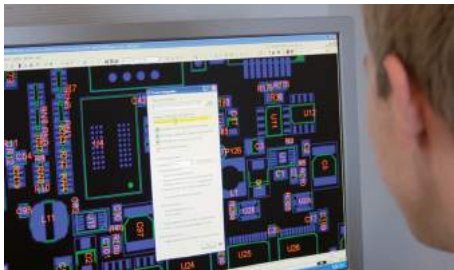
Our competent and motivated employees translate current market trends into innovative solutions at an early stage - be it for the long-term assurance of delivery capability, lifecycle management for hardware and software, as answers to security questions, or challenges relating to IoT, cloud services, and industry 4.0.

Due to the long-standing and close contact to processor and hardware manufacturers, we receive hardware at an early developmental stage. In this way, we provide you with a decisive head start over the competition.

The latest technologies and findings applied correctly at an early stage: PHYTEC is your guaranteed partner for longer life cycles and greater efficiency.



**Together. Solution-driven.**



*Optimized layouts for industrial solutions and manufacturing processes ranging from prototypes to series production – Development and Manufacturing at PHYTEC headquarters in Germany*

### Processor Partners





## Strong Values – for strong partnerships

With around 370 employees worldwide, its headquarters in Mainz, Germany and locations in the US, France, India and China, PHYTEC is an internationally operating supplier of series products.

Nevertheless, we have remained a family business – employee satisfaction, healthy growth and socially responsible corporate management are a few of our core values. The low employee turn-over confirms our actions. We see ourselves as responsible for the success of everyone concerned.

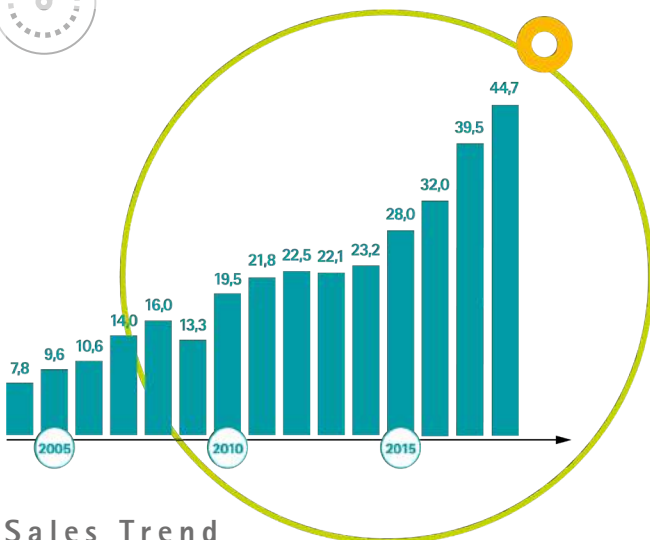
The basis for this is the financial independence of our company with an equity ratio of approx. 60% (2017 figures). That means highest credit ratings and the best financial standing. PHYTEC is wholly owned by the founding family and the management. The course has already been set for a continuation of the family-owned company over the next decade.

We have doubled our corporate performance in the last five years and achieved global sales of around 60 million Euros in 2018. For 2019, we expect double-digit sales growth at the Mainz headquarters. This means we are a reliable, stable employer for our employees.

As a steadfast, crisis-proof supplier, we secure sustainable competitive advantages for our customers. That's the mission of PHYTEC.



**Together. Reliable.**



### Sales Trend

Dipl.-Ing. Bodo Huber  
Chairman  
PHYTEC Technologie Holding AG  
CEO PHYTEC Messtechnik GmbH

Dipl.-Ing. Michael Mitezki  
Chairman  
PHYTEC Technologie Holding AG  
CEO PHYTEC Messtechnik GmbH

PHYTEC Messtechnik GmbH, Mainz in Mio EUR,  
with equity ratio development (solely from retained earnings)

# We are here for you!

Get in touch with PHYTEC  
about your next project:



# PHYTEC

**Germany**  
PHYTEC Messtechnik GmbH  
D-55129 Mainz  
Tel: +49 6131 9221-32  
Fax: +49 6131 9221-33  
[www.phytec.de](http://www.phytec.de) / [www.phytec.eu](http://www.phytec.eu)

**India**  
PHYTEC Embedded Pvt. Ltd.  
Bangalore  
560102  
t +91 80 40867046  
[www.phytec.in](http://www.phytec.in)

**France**  
PHYTEC France SARL  
F-72140 Sillé le Guillaume  
Tel: +33 2 43 29 22 33  
Fax: +33 2 43 29 22 34  
[www.phytec.fr](http://www.phytec.fr)

**China**  
PHYTEC Information Technology Co. Ltd.  
Shenzhen, PRC 518026  
Office: +86 755 6180 2110  
Mobil: +86 186 8066 896  
[www.phytec.cn](http://www.phytec.cn)

**North America**  
PHYTEC America LLC  
Bainbridge Island, WA 98110  
Tel: +1 206 780-9047  
Fax: +1 206 780-9135  
[www.phytec.com](http://www.phytec.com)

